

# MISSION



**Our mission is to inspire hope in our communities by providing food to nourish Delawareans, while collaborating on long-term solutions to hunger and poverty.**

## OUR STRATEGIC GOALS:

### **Strengthen**

Continue to expand capabilities to address food insecurity, statewide

### **Feed**

Get food distributed

### **Transform**

Continue to focus on economic empowerment through workforce and community development programs

### **Unite**

Increase awareness of food insecurity and inspire action to create a community free of hunger

### **Sustain**

Leverage resources to support our programs and operations



**HOW WE  
FIGHT  
HUNGER**



**FOOD DISTRIBUTION PROGRAMS**



**WORKFORCE & COMMUNITY  
DEVELOPMENT PROGRAMS**

A member of **FEEDING  
AMERICA**

# OUR PROGRAMS



The Food Bank of Delaware is more than just a warehouse that accepts and distributes food donations. We're fighting hunger on all fronts – learn more about how our programs are both feeding and empowering Delawareans!

## FOOD DISTRIBUTION

### Backpack Program

This program provides food to at-risk children for weekends and holidays when school is not in session or federal school meal programs are not available. Backpacks are stocked with kid-friendly, nutritious food including shelf-stable milk and juice, pop-top cans, macaroni and cheese, apple sauce, cereal and more.

### Commodity Supplement Food Program

The Commodity Supplemental Food Program (CSFP) is a federal food program that is designed to improve the health of senior citizens. Food for the program is provided by the United States Department of Agriculture's agency of Food and Nutrition Service. Eligible seniors must meet income requirements, live in Delaware and be at least 60 years of age.

### Hunger Relief Partners

The Food Bank distributes food out through a network of partner agencies. These partners include food closets in schools, churches and other organizations, soup kitchens, shelters and other organizations that are directly serving the public.

### Mobile Pantry

A Food Bank truck goes directly into underserved communities to distribute food. Both perishable and nonperishable foods are distributed. Distributions take place in both a scheduled and pop-up fashion.

### Healthy Pantry Center

Due to COVID-19, the pantry is currently available as a drive-up. Individuals in need of assistance can drive up to pantry parking lot and a volunteer brings out a cart of food.

### Home Delivery

Thanks to partnerships with DoorDash and Amazon, the Food Bank of Delaware is able to deliver food directly to those in need.

## **WORKFORCE & COMMUNITY DEVELOPMENT**

### **SNAP-Education (Supplemental Nutrition Assistance Program)**

Funded by the United States Agriculture Department's Supplemental Nutrition Assistance Program (formerly Food Stamp Program), this program aims to educate SNAP recipients on healthy eating decisions within a limited budget. The SNAP-ed team also encourages donations of nutritious food and works with Food Bank partners to ensure that low-income Delawareans are receiving a variety of healthy foods when visiting local pantries.

### **Smart Choices for WIC**

Smart Choices for WIC (Women, Infants, and Children) is a skills and knowledge-building program utilizing the 2010 Dietary Guidelines and USDA MyPlate recommendations. This program focuses on teaching pregnant and new mothers about healthy eating and how they can learn to prepare nutritious easy meals from the foods on their food vouchers. Classes are held at WIC clinics and community locations throughout the state.

### **Benefits Outreach**

The Benefits Outreach team at the Food Bank of Delaware conducts outreach activities to individuals who are eligible to receive benefits like SNAP, Purchase of Care, Medicaid, Temporary Assistance for Needy Families and more.

### **Stand By Me**

The mission of Stand By Me® is to provide Delawareans with a Personal Financial Coach and a toolkit to navigate the challenges leading to personal financial security. The program goal is to increase the capacity of Delawareans to understand and manage their finances in order to increase their financial stability and future economic opportunities. Two Stand By Me Coaches are housed out of the Food Bank of Delaware.

### **Delaware Food Works**

Delaware Food Works is a workforce development initiative of the Food Bank of Delaware. Delaware Food Works provides training opportunities to Delaware adults in the areas of food service (The Culinary School) and warehousing/logistics (L.O.G.I.C. - Logistics, Operations, General Warehousing and Inventory Control)



## HOW TO GET HELP:



### MOBILE PANTRY

Our trucks go directly into underserved communities to distribute food. Distributions are scheduled and pop up.



### SENIOR MEAL BOXES

We distribute free food boxes monthly through the Commodity Supplemental Food Program.



### BACKPACK PROGRAM

We distribute weekly meal bags to children through schools, preschools and childcare centers.



### HEALTHY PANTRY CENTER

Community members in need can go directly to the Food Bank in Newark or Milford for assistance.



### HOME DELIVERY

Partnerships with Amazon and DoorDash enable us to deliver food directly to homes.

### FOR MORE INFORMATION:



[www.fbd.org/  
get-help](http://www.fbd.org/get-help)



[foodbank@  
fbd.org](mailto:foodbank@fbd.org)



**(302) 292-1305**  
ext 232

## WAYS WE EMPOWER THROUGH WORKFORCE AND COMMUNITY DEVELOPMENT



### TRAINING PROGRAMS

We train adults for careers in food service and warehousing/logistics.



### NUTRITION EDUCATION

We educate neighbors about healthy eating, encourage nutritious food donations and work with food closets.



### STAND BY ME

We provide financial coaching to help with budgeting, savings, debt-relief and more.



### BENEFITS OUTREACH

We screen Delawareans for a variety of benefits including SNAP.



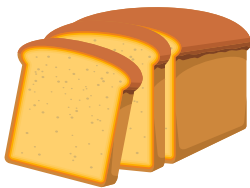
# FOOD BANK OF DELAWARE

## FY 2022 FAST FACTS

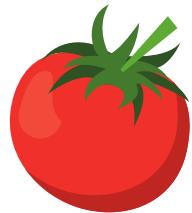
July 1, 2021 - June 30, 2022



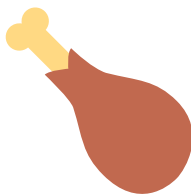
**16,996,621 pounds of food brought in**



**16,517,697 pounds of food distributed**



**4,290,143 pounds of produce distributed**



**2,591,631 pounds of meat distributed**



### Food distribution by county

8,516,487 pounds in New Castle County

4,271,922 pounds in Kent County

3,600,696 pounds in Sussex County

**112,000  
Delawareans  
receive food  
assistance  
through the  
SNAP program.**



**15,541**  
volunteer visits

**46,234**  
hours donated

*Equals 22 full-time staff members  
Sign up: [www.fbd.volunteerhub.com](http://www.fbd.volunteerhub.com)*



**745  
Hunger  
Relief  
Partners**



**170,270 backpack  
meal kits distributed**



**726 mobile pantries  
assisted 70,687 households**



**28,583 households  
served through the on-site  
Healthy Pantry Centers**



**41,032 home deliveries  
made through Amazon  
and DoorDash**



**39 Delaware Food  
Works graduates**



**1,025 SNAP  
applications submitted  
for Delawareans**

# PROGRAM HIGHLIGHTS FISCAL YEAR 2022

July 1, 2021 - June 30, 2022

## Delaware Food Works

- The Culinary School is a free 14-week program for unemployed, underemployed, returning citizens, individuals with disabilities and those in career transition that teaches basic and high-end kitchen skills, ServSafe training and life skills, culminates with a 2 week paid work experience. In FY22, 28 students graduated from the program. Our Summer Culinary Exploration Program provides training to young adults ages 16-21 with intellectual disabilities. In FY22 12 students completed the program.
  - In addition to workforce training programs, the culinary team also runs the Discover Cafe, an on-site cafe at the Newark facility that serves lunch and sells fresh produce from the Food Bank farm, ice cream, cheese, frozen meals and soups, local meats, honey, jam, hot sauce and more.
  - Catering and weekly soup/salad sales also help support student scholarships to the 14-week culinary training program.
- L.O.G.I.C. (Logistics, Operations, General Warehousing and Inventory Control) is a free 11-week training program that prepares students for careers in the warehousing/logistics industry. In the 2022 fiscal year, we had 11 graduates.

## Food Distribution

- Backpack Program: At peak distribution, 5,500 children received meal bags through the Backpack Program –170,270 meal bags were distributed through 154 statewide sites. It costs \$268 to provide a child with food for an entire year.
- School Pantry Program: 128,773 pounds were distributed through 46 school pantries.
- Mobile Pantry: The mobile pantry truck visits a variety of organizations, neighborhoods and other community locations. Pantries are conducted in both a scheduled and pop-up fashion. Households in need of assistance receive a variety of food including nonperishable, bakery items, meats, dairy and produce depending on availability. In FY22, 726 mobile pantries were held at 301 partnering sites, serving a total of 70,687 households; 8,206,628 pounds were distributed.
- Senior Nutrition: In FY22, we distributed 18,410 meal boxes to seniors (60+) through the monthly distribution of the USDA funded Commodity Supplemental Food Program and private funding through the Palmer Home Foundation.
- Home delivery of food is available through partnerships with DoorDash and Amazon. In FY22, we made 3,223 home deliveries through DoorDash and 37,809 deliveries through Amazon.
- Healthy Pantry Center: On-site food pantries are located in both the Newark and Milford warehouses. In FY22, 28,583 households were served and 2,308,069 pounds of food were distributed

## Nutrition Education & Community Outreach:

- SNAP-Education: The team teaches people how to shop using their SNAP dollars, cook healthy meals and stay physically active. Nutrition Education includes: in-person or virtual classes, food demos, distribution and development of recipes and informational materials, and participation in and support for community and outreach events. The team also works with partner food pantries to assist them in distributing nutritious food and encouraging recipients to make healthy choices. This includes: signage, posters, product placement and information on how to stretch food dollars. In FY 22, 413 adults and children received direct education. Indirectly through flyers and other materials, the team reached more than 37,000 Delawareans.
- In FY 22, SNAP Outreach Coordinators provided application assistance to 1,025 Delaware households.
- WIC Education teaches WIC eligible pregnant women and families about how they can prepare nutritious easy meals from the foods on their WIC benefits card. Classes are conducted in person and virtually. Flyers and other materials are also distributed to the community.
- The FBD serves as a community partner to deliver Stand by Me financial coaching to the public. In FY22, our financial coaches assisted 383 clients.

## Food Bank Farm

- A 5-acre farm is located at the Food Bank's Newark facility. In FY22, more than 16,777 pounds of produce were harvested.
- Produce is sold on-site at the Discover Cafe, featured in a seasonal CSA and distributed through the Healthy Pantry Center.

# BUILDING A BRIGHTER FUTURE



2022  
ANNUAL REPORT



You can't help but smile when you see the kids on the cover. They are filled with so much joy and hope. In addition to providing much-needed food to our community, we are also uplifting and empowering our neighbors - of all ages - through outreach and education.

I have always been the eternal optimist, but there is no denying that the past three years have been incredibly difficult. From a once-in-a-lifetime pandemic to record-high inflation, it feels like none of us have gotten a break – especially those with limited resources.

Despite incredible hardships, these little ones give me so much hope for a brighter future. I know that better days are ahead. Your commitment and generosity reminds me of all the good that takes place right here in our community.

Our work is not possible without you. Some of our proudest achievements of the year include:

- We provided more than 19.8 million meals to our neighbors in need. Forty-nine percent of the food we distributed was fresh produce and other healthy perishable food.
- We broke ground on our new 67,000-square-foot facility in Milford in September, and we expect to officially open the doors in Fall 2023. We are "Building Hope" in Milford so we can better serve our community.
- In October 2022, we launched our new 12-week culinary training program for adults with disabilities, The Kitchen School. We are committed to providing inclusive opportunities for all.

I am hopeful that inflation will slow, prices will start to come down, and much-needed relief will be felt throughout our communities this year. One thing that I can be certain about – the Food Bank of Delaware will be here to serve, uplift and empower our community. Brighter days are ahead.

Gratefully,

A handwritten signature in black ink that reads 'Cathy Kanefsky'. The signature is written in a cursive, flowing style.

Cathy Kanefsky  
President and CEO





## OUR VISION

A community free of hunger

## OUR MISSION

To inspire hope in our communities by providing food to nourish Delawareans while collaborating on long-term solutions to hunger and poverty.

## OUR VALUES

Compassion

Diversity/Inclusiveness

Collaboration

Empowerment

Innovation



# OUR 2022 NUMBERS SHOW THE SUSTAINED NEED FOR FOOD AND SUPPORT.



**16,996,621  
POUNDS  
BROUGHT IN**



**16,517,697  
POUNDS  
DISTRIBUTED**



**2.5 MILLION  
POUNDS  
OF MEAT**



**4.29 MILLION  
POUNDS  
OF PRODUCE**

## 19.8 MILLION MEALS FOR DELAWAREANS IN NEED

**170,270**

weekend meal kits for  
kids distributed

**41,032**

home deliveries  
made

**23,583**

visits to our on-site  
Healthy Pantry  
Centers

**70,687**

visits to 726 mobile  
food pantries

Hunger Relief Partners help connect the Food Bank to Delawareans in need. Pastor Rachel Howell leads Perfecting Holiness Deliverance Ministries in Newport, and her team hosts the Love in Deed food distribution.







Food insecurity exists in every Delaware community - including those perceived as affluent. The Cape Henlopen Food Pantry provides assistance in Delaware's coastal community. The pantry sees people from all walks of life including grandparents, families going through reorganization, seasonal workers who feel the impact of working in a resort community and individuals who are unhoused.

*Pictured: Clare MacDonald, Cape Henlopen Food Pantry board secretary, and volunteer Frank Fumagalli*





# FOOD DISTRIBUTION







# IN 2022, WE EMPOWERED LIVES THROUGH WORKFORCE & COMMUNITY DEVELOPMENT.



**40 STUDENTS  
GRADUATED  
FROM CULINARY  
TRAINING**



**11 STUDENTS  
GRADUATED FROM  
WAREHOUSE  
TRAINING**

**OUR PROGRAMMING  
ADDRESSES BOTH  
IMMEDIATE AND LONG-  
TERM SOLUTIONS TO  
FOOD INSECURITY.**

## WE ARE PAVING A PATH TO SUSTAINABILITY.

**1,025**

SNAP applications  
submitted for  
Delawareans

**37,000**

Delawareans reached  
through nutrition  
education

**383**

Delawareans assisted  
with financial  
coaching

**31**

individuals participated  
in our Economic  
Mobility Pilot



**Students are taught skills that are highly desirable to employers. Program graduates have the potential to obtain jobs in the industry that provide job security and economic sustainability.**



EMPOWERING LIVES



In October 2022, we launched The Kitchen School, a 12-week culinary training program for adults with disabilities. In partnership with the Delaware Restaurant Association, the program offers specialized training to prepare students for employment opportunities in the food and hospitality industries. Students spend 8 weeks at the Food Bank kitchen in Newark or Milford; after that, an additional four weeks are spent transitioning to permanent employment through on-site job coaching.

*Chef Ron Roll instructs the first cohort of The Kitchen School*





EMPOWERING LIVES







IN 2022, WE OFFICIALLY BROKE  
GROUND ON OUR NEW FACILITY  
IN MILFORD.



**CONSTRUCTION  
WILL TAKE  
APPROXIMATELY  
14 MONTHS**



**THE PROJECT'S  
TOTAL COST IS  
\$34 MILLION**

**OUR NEW 67,000-SQUARE-  
FOOT FACILITY WILL  
ENABLE US TO BETTER  
SERVE OUR COMMUNITY.**

**WE ARE BUILDING HOPE IN MILFORD.**

**3,700,000**

more pounds of food  
distributed  
from new facility

**80**

additional neighbors  
served through on-  
site food pantry  
each day

**15,000**

pounds of produce  
grown on 3.5-acre  
garden

**100**

students to be trained  
in warehousing and  
culinary arts

An architectural rendering of the new facility shows off the expanded warehouse space and outdoor gardens to grow our own foods.







BUILDING HOPE IN MILFORD



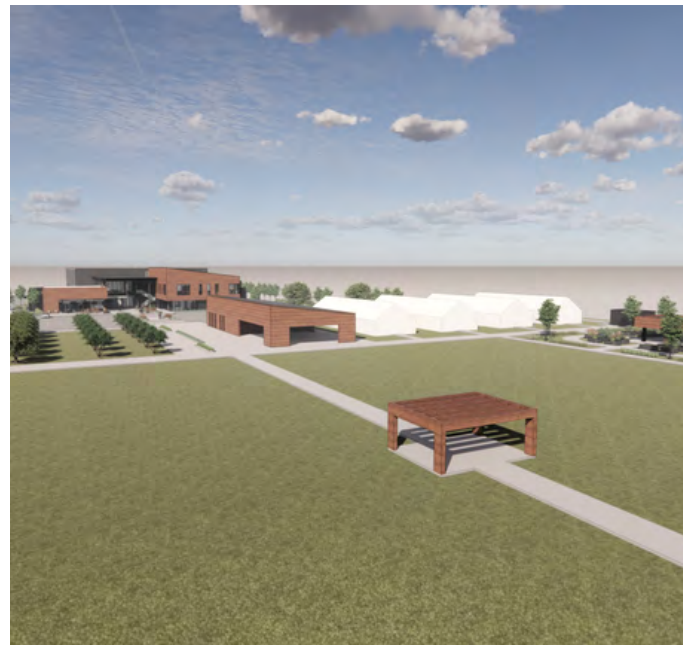
Community leaders and Food Bank supporters gathered in September 2022 to mark the official groundbreaking of the new Food Bank facility in Milford. The new 67,000-square-foot facility will replace the current 16,000-square-foot facility on Mattlind Way.

**Food**  
OF DELAWARE





# BUILDING HOPE IN MILFORD







# IN 2022, WE EXPANDED THE NEWARK FARM TO GROW MORE FOOD FOR OUR COMMUNITY.



**16,777 POUNDS  
OF PRODUCE  
GROWN**



**300,00  
SEEDS PLANTED**

**THE FIVE-ACRE FARM  
CONSISTS OF A  
PROPAGATION HOUSE,  
THREE HIGH TUNNELS, A  
DEMONSTRATION GARDEN,  
BEE HIVES, FRUIT TREES,  
AND FIELD SPACE.**

## FRESH PRODUCE FOR OUR NEIGHBORS IN NEED

**1,238**

volunteers assisted  
on the farm

**56**

different varieties of  
fruits and vegetables  
grown

**1,350**

starter plants grown  
for community  
gardens

**145**

days of harvesting



**Our farm is not possible without the hard work of  
volunteers who help with planting, weeding, watering, harvesting and more.**





**Vegetables are grown year-round using seasonal varieties that perform well in the region. The farm follows best management practices that prioritize produce quality and yield as well as environmental sustainability. The propagation house enables year-round production of healthy starter plants.**

***Community Farm Assistant Brendan Darji leads a team of volunteer harvesters in one of the farm's high tunnels.***





# GROWING OUR OWN FOODS







OUR WORK IS NOT POSSIBLE WITHOUT  
THE GENEROSITY OF THE COMMUNITY.



**15,541**  
**VOLUNTEER**  
**VISITS**



**46,234**  
**HOURS DONATED =**  
**22 FULL-TIME STAFF**  
**MEMBERS**

**VOLUNTEERISM,  
COMMUNITY FOOD DRIVES,  
SPECIAL EVENTS AND  
FUNDRAISERS HELP BRING  
IN MUCH NEEDED  
RESOURCES FOR OUR  
MISSION.**

**FOR EVERY \$1 DONATED, WE CAN PROVIDE 3 MEALS.**

**250**

community  
food drives held

**1,300**

individuals  
attended special  
events

**570,882**

pounds of food  
donated through  
community  
members

**112,090**

pounds of food  
collected through  
special initiatives



**The second annual Forks on the Farm dinner featured the bounty of the farm's fall harvest and the talents of the culinary students.**



OUR GENEROUS COMMUNITY



**Our work is not possible without the generosity of our community. Our volunteers and supporters are the heart and soul of our organization.**





# OUR GENEROUS COMMUNITY







# STATEMENT OF FINANCIAL ACTIVITIES

## JULY 1, 2021 - JUNE 30, 2022

### SUPPORT

Contributions	\$8,251,270
Contributions - Donated Product	\$18,521,195
Contributions - Capital Campaign	\$155,370
Fees and Grants from Government Agencies	\$6,895,313

---

<b>TOTAL PUBLIC SUPPORT</b>	<b>\$33,823,148</b>
-----------------------------	---------------------

### REVENUE

Food Sales	\$1,052,301
Shared Maintenance	\$28,035
Transportation	\$22,814
Interest Income	\$4,291
Gain on Sale of Building	(\$22,810)
Realized and Unrealized Gains	\$310
Miscellaneous	\$1,174,396

---

<b>TOTAL REVENUE</b>	<b>\$1,174,396</b>
----------------------	--------------------

---

<b>TOTAL SUPPORT AND REVENUE</b>	<b>\$34,997,544</b>
----------------------------------	---------------------

### EXPENSES

Program Services	
Food Distribution	\$27,209,325
Community Development	\$2,846,010

---

<b>TOTAL PROGRAM SERVICES</b>	<b>\$30,055,335</b>
-------------------------------	---------------------

Support Services	
General and Administrative	\$1,337,842
Fund Raising	\$1,797,972

---

<b>TOTAL SUPPORT SERVICES</b>	<b>\$3,135,814</b>
-------------------------------	--------------------

---

<b>TOTAL EXPENSES</b>	<b>\$33,191,149</b>
-----------------------	---------------------

---

<b>CHANGE IN NET ASSETS</b>	<b>\$1,806,395</b>
-----------------------------	--------------------

<b>NET ASSETS - BEGINNING OF YEAR</b>	<b>\$39,442,279</b>
---------------------------------------	---------------------

<b>NET ASSETS - END OF YEAR</b>	<b>\$41,248,674</b>
---------------------------------	---------------------





# BOARD OF DIRECTORS

## Executive Committee

Andy Larmore  
Board Chair  
Bayshore Transportation

Steve Thompson  
Chair-Elect  
Retired, Utility Executive

April Birmingham  
Treasurer  
M&T Bank

Andrew Levin  
Secretary  
Onix Group

Nicole DiMondi  
Workforce & Community  
Development Chair  
DuPont

Tim McCann  
Operations Chair  
Retired, DuPont

Gregg Schmidt  
External Affairs Chair  
Corteva Agriscience

Jeff Whitmarsh  
Development Chair  
Delaware State Police

## Board of Directors

Maurice Catlett  
SoDel Concepts

Bernice Edwards  
First State Community Action Agency

Jason Jowers, Esq.  
Bayard Firm

Leslie Kosek  
JPMorgan Chase

Scott Lammers  
JPMorgan Chase

David Marvel, Jr.  
Fruit and Vegetable Growers  
Association of Delaware

Ruth Mayer  
Retired Educator

Henri Moore  
GSK Consumer Health

Tucker Norton  
DuPont

Catherine Sandler  
Bank of America

Bill See  
Perdue Farms



# LEADERSHIP TEAM

Cathy Kanefsky  
President and CEO

Larry Haas  
Chief Development Officer

Joy Hudson  
Sr. Director of Human Resources

Anna McDermott  
Sr. Director of Workforce &  
Community Development

Chad Robinson  
Sr. Director of External Relations

John Snarsky  
Milford Operations Director

Kim Turner  
Sr. Communications Director

Trevor Turner  
Chief Operating Officer



# SUPPORTING THE FIGHT AGAINST HUNGER

July 1, 2021 - June 30, 2022

## PRODUCT PARTNERS

### 100,000 - 500,000 POUNDS

Food Lion	419,102
Sam's Club	415,182
Mid-Atlantic Regional Cooperative	360,360
Trader Joe's	240,703
Walmart	236,910
Acme	217,448
Giant	166,792
Target	159,541
Costco	158,133
BJs	150,673
Perdue	126,626



### 50,000 - 99,999 POUNDS

Dole	75,066
Redner's	67,935
ShopRite	56,060
Stamp Out Hunger Postal Food Drive	51,763



### 20,000 - 49,999 POUNDS

Sprouts	48,761
Aldi	43,932
PetSmart	42,180
Chiquita Brands LLC	40,818
Jesus Christ of Latter-Day Saints	37,181
DART's Stuff the Bus Food Drive	29,126
Feeding America	29,086
The Fresh Market	25,567
Delaware Humane Association	22,660
Fifer Orchards	20,344



### 15,000 - 19,999 POUNDS

Butcher Box	19,162
Dover Air Force Base	16,615
Savage Poultry	15,036



# FUNDING THE FIGHT AGAINST HUNGER

July 1, 2021 - June 30, 2022

## Champion of Hope - \$100,000+

Ahold Delhaize America  
Bank of America  
Barclay's Bank Delaware  
Christiana Care Health Services  
Estate and Trust of Donald M. Sproat  
Ms. Katharine Gibson  
Harry K Foundation  
Incyte Corporation  
The Laffey - McHugh Foundation



## Leader of Hope - \$50,000 - \$99,999

The Acierno Family Foundation  
City of Milford  
Dr. Anna Marie D'Amico  
DuPont  
Ellice and Rosa McDonald Foundation  
Our Family Foundation by Giant  
Palmer Home Inc.



## Nourisher of Hope - \$25,000 - \$49,999

The Albertsons-Safeway Foundation  
BlackRock  
Capital One Services, LLC  
The Chichester duPont Foundation, Inc.  
Chick-fil-A, Inc.  
Collins Charitable Foundation  
Comcast Cable  
Community Food Bank of NJ  
The Discover Brighter Futures Fund  
Enterprise Holdings Foundation  
HBCS  
Hologic Charitable Fund  
JPMorgan Chase & Co.  
The Susan and Dan Katzin Family Fund  
MidAtlantic Farm Credit, FLCA  
Steve & Shelly Thompson  
Tidewater Utilities, Inc.  
United Way of Delaware  
Wakefern Food Corporation  
Mr. Lyle Wallig





**Cultivator of Hope - (\$10,000 - \$24,999)**

Alliance Marketing Partners LLC  
Amazon.com  
Atlantis Fund  
Ms. Diana Blais  
Mr. Will Bradley  
Corteva Agrisciences  
CSP Family Foundation  
Delaware Restaurant Association  
Discover Financial Services  
DoorDash, Inc.  
Mrs. Herbert Eleuterio  
Ellen and Alan Levin Family Foundation  
Fund for Women  
Ms. Catherine Gelwicks  
Ahold Delhaize USA Giant Food  
The Glore Fund  
Mr. and Mrs. J. S. Grant  
Harris Teeter  
Mr. William B. Herdle  
Mr. Jonathan Jaffe  
Mrs. and Mr. Barbara F. Jaffee  
Jason and Randi Jowers  
Mr. and Mrs. Kenneth Lau  
Mr. and Mrs. Alan B. Levin  
Ms. Ruth A. Mayer  
Middlerun Foundation  
Mr. Charles Nelson  
Nemours Foundation  
Norfolk Southern Foundation  
Joseph Oddo  
Ms. Pamela M. O'Hara  
Ms. Denise T. Quigley-Taylor  
Red Clay Creek Presbyterian Church  
Ms. Alice D. Reilly  
Ross Aronstam & Moritz, LLP  
Mr. Nott G. Sankar  
Ms. Sharon Schoonover  
Share Our Strength  
Mr. and Mrs. Jeffrey Simpson  
Diana & Floyd Smith  
The Hompe Foundation  
The Needy Family Fund  
The Wright-Hager Foundation  
USDA  
Verisign  
Wells Fargo Foundation  
Mr. and Ms. Evans Witt

Mr. and Mrs. Kenneth W. Young

**Gatherer of Hope - (\$5,000 - \$9,999)**

3M Foundation  
Acme Markets Foundation  
Mr. Randy Anderson  
Mr. and Mrs. Robert S. Appleby  
Mr. Ray Pateroster and  
Ms. Ronet Bachman  
Bank of America Employee Giving  
Bay Forest Community  
Bayard, P.A.  
Karl and Kristin Bennett  
Mr. Gary Beste, Sr.  
Blanchard Family Foundation  
The Boston Beer Company  
Bove And Hedrick  
Caliber Collision Centers Foundation  
The Carolyn S. and Donald F. Obrecht  
Foundation  
Mr. and Mrs. Eric Carr  
Chemours Discovery Hub  
Dr. and Mrs. David Chen  
Chesapeake Bay Area CFC  
Mr. Mark C. Class  
Mr. and Mrs. Pat Confalone  
Mr. and Mrs. Larry E. Cook  
Michael and Ann Coughlin  
Mr. and Mrs. Matthew S. Criscimagna  
Croda  
CVS Corporation  
D T & Sons, Inc.  
Mr. Ravi Dattani  
Ms. Maureen Davis  
Delaware Farm Bureau Foundation  
Delta Dental Community Care  
Foundation  
Costel Denson  
Dogfish Head Beer and Benevolence  
Ms. Julianne Dugan  
Eckert Seamans Charitable Foundation  
Ms. Marie Edwards  
Exelon Corporation  
Mr. Joseph Francis  
Mrs. and Mr. Nancy G. Frederick  
Ms. and Mr. Alison Frost  
Lois and Brian Galinat  
Mrs. Kimberly S. Grim

Mr. and Mrs. John R. Hansen  
Mr. William Hartnett  
Christine Hastings  
Denison and Wendy Hatch  
Dr. Evelyn Hayes  
Mr. and Mrs. Roger M. Holcomb  
Jake Hubik and Chuck Samaha  
Mr. and Mrs. Matthew C. Illingworth  
Immaculate Heart of Mary Outreach  
Jane M. Sheehan Charitable Foundation  
Mr. and Mrs. Andrew M. Johnston  
Land O'Lakes, Inc. Foundation  
The Legatski Estate  
Mr. Rich Angiullo and Ms. Holly Lissner  
Marvin Family Foundation  
Ms. Ellen Mayhew  
Mr. and Mrs. Bill C. McGinley  
Mrs. Jane E. McKinstry  
Andy Miller  
Mr. and Mrs. Thomas C. Miller  
Ms. Pauline Morgan  
Ms. Kirsten Mucha  
Ms. Kathy Neilson  
Newark New Century Club  
Ms. Ellen M. Nobles-Harris  
Dr. and Mrs. Tucker Norton  
Mr. and Mrs. Robert J. Pasteris  
The Patocs Foundation  
James and Kathleen Patton  
Frank Robb  
Blake and Mitzi Rohrbacher  
Santander Bank  
Mr. and Mrs. Kevin R. Shannon  
Dr. Barbara L. Sheer  
Ms. Paula Simon  
Mr. Cam Stickley  
Dr. Thomas A. Sweeney  
Mr. and Mrs. Kunjathan Thankappan  
The TJX Foundation, Inc.  
Town of Elsmere  
United Church De  
United Medical, LLC  
Whiting-Turner Contracting Company  
Wilson Sonsini Goodrich & Rosati  
Foundation  
Ms. Barbara H. Wood  
Mary and Kent Woods  
Mr. Edgar S. Woolard

Ms. Carol Yates

**Gardener of Hope - (\$2,500 - \$4,999)**

A & F Machine  
AAA Club Alliance  
Aids Delaware  
Mr. and Mrs. Fredrick Alexander  
All Saints' Church & St. George's Chapel  
Mr. Vincent Allard  
Mr. and Mrs. James O. Altrichter  
Mrs. B. Jennine Anderson and  
Mr. Henry Cole  
Ms. Genara Andrade  
Arbor Material Handling  
Mrs. Janet H. Arenson  
Mr. James Baran  
Mr. and Mrs. Tom Barietta  
Ms. Margaretta Barton Colt  
Dr. and Mrs. Charles Bean  
Ms. Kim Benton  
Mr. and Mrs. Randall S. Best  
BlueCross BlueShield of Delaware  
Mr. and Mrs. Thomas M. Bouchelle  
Mr. Richard Braid  
John and Patricia Breuer  
Mr. Donald L. Campbell  
Ms. Katharine Carter  
Mrs. Kathleen A. Chalmers  
Chesapeake Utilities  
Chick-fil-a at Milford Plaza  
Mrs. Debra Christie  
Ms. Beverly Ciamaricone  
The Colonial Dames of America  
Delaware  
Ms. Liz Confalone  
Cornerstone Fellowship Baptist Church  
Creative Concepts of Bethany, Inc.  
Mr. and Mrs. Michael D'Amore  
Mr. Thomas B. Davey  
Mr. and Mrs. Stephan C. De La Veaux  
Ms. Catherine Dean  
Delaware Bankruptcy Inn of Court  
Delaware City Refining Company  
Mrs. Marilyn Dennis  
Ms. and Mr. Margaret Derrickson  
Dr. and Mrs. Phillip Dobson  
Mr. Kevin M. Dolan  
Mr. Paul Dryden



Mr. and Mrs. Paul & Pat Ehrler  
Encompass Elements  
Encore Provisions, Inc.  
Ms. Jane Evans  
Mr. and Mrs. Richard J. Facciolo  
Mr. and Mrs. David P. Fields  
First & Central Presbyterian Church  
Flagship Credit Acceptance  
Mr. John E. Flood  
GFWC Zwaanendael Women's Club  
Mrs. Martyanne Grabusky  
Grace United Methodist Church  
Paula Grant  
Mrs. Yasmin Guirgis  
Hendrick Automotive Group  
Hockessin United Method Church  
Mr. and Mrs. Chester D. Hollingsworth  
Mr. and Ms. Timothy A. Hummel  
Mr. Donald W. Jardine  
Jeffie's Choice Inc  
Mr. Dean W. Johnson  
Mr. and Mrs. Scott Johnson  
Dr. and Dr. Susan Jungck  
Karins Engineering  
Barbara Kelly  
Kent County Levy Court  
Ms. Julianne LaBadia  
Mr. and Mrs. Daniel L. Laughman  
Mr. Martin Lawson  
Mr. Michael Quirk and Ms. Katherine Lee  
Dr. and Mrs. Joseph K. Lees  
Mr. and Mrs. Carl E. Leshock  
Life Beyond the Bar LLC  
Mrs. and Mr. Marian Lockwood  
Tina and Harvey Maclary  
Mr. Joseph Magrogan  
The Martin Dealerships  
Mr. and Mrs. Daniel D. Matthews  
Mr. and Mrs. John F. McMillan  
Ms. Diana M. Metzger  
Mrs. Janice Mink  
Mr. and Mrs. David Mitchell  
Mr. and Ms. Norman M. Monhait  
National Association of  
Letter Carriers of the USA  
New Castle Conservation District  
Newark United Methodist Church  
Col. and Mrs. Ronald E. Nitzsche

Nuclear Electric Insurance, Ltd.  
Ocean Atlantic Sotheby's  
Mr. David Ogren  
On Your Toes  
Pampered Chef  
Mr. and Mrs. James A. Perry  
Gary and Lear Pfeiffer  
Mr. and Mrs. Ed Powers  
Mr. Joel Reiss  
Mr. and Mrs. Jeffrey T. Rigg  
Mr. and Mrs. David B. Ripsom  
The Rivendell Foundation, Inc.  
Mrs. and Mr. June Robbins  
Ms. Judith E. Rosenstein  
Ms. Melissa Rudy  
Mrs. and Mr. Michelle M. Rumble  
Mr. H. Sawyer  
Seiberlich Family Foundation  
H. Rodney and Lynn Sharp  
Mr. Waheed Sheikh  
Mr. and Mrs. Fil E. Sherry  
Mr. Adam D. Shilling  
Ms. Eve Slap  
Mr. David Snyder  
Mr. Thomas Spittal  
Mr. and Mrs. John J. Stephens  
Mr. and Mrs. Richard Stevenson  
Sherry Sweetman  
Mr. Troy Talbert  
Mr. and Dr. Gerhard Thelen  
Ms. Mardi R. Thompson  
Mrs. Andrea Thomson  
Mr. Parker C. Thrasher  
Mr. and Mrs. Donald J. Toton  
Mr. and Mrs. Jeffrey S. Townsend, Sr.  
Mr. Jason S. Tyler  
United Way of Greater Philadelphia  
and Southern New Jersey  
Mr. Scott Wagner  
Mr. Steven Walczak  
Mrs. Diane Walls  
Mr. and Mrs. Andrew Walpole  
Dr. Calvin Warren Jr.  
Ms. Joanne Warren  
Water Doctors Int.  
Western Industries - North, LLC  
Mrs. Rosemarie White  
Mr. and Ms. Christian Wright

**Seed of Hope - (\$1,000 - \$2,499)**

A-1 Services General LLC  
Mr. John Abood  
Mr. Michael Acevedo  
Mr. and Mrs. David J. Adams  
Dr. and Mrs. Harvey Adams, Ph.D.  
Mr. Jerome Adams  
Mr. Steven Adams  
Ms. Lenora Addison  
Mr. and Mrs. Douglas J. Adelman  
Dr. John Aje  
Ms. Jeanette Akhter  
The Alias Group  
Charles W. Allen and Linda SnyderAllen  
Mrs. Satri Alpine  
AmazonSmile Foundation  
American Honda Finance Corporation  
Ms. Dia Ames  
Mr. Victor D. Amey  
Mr. Joe Amodei  
Ms. Carol Amos  
Amy's Flowers  
Ms. Judy Anderson  
Ms. Valerie Aptt  
Artesian Water Company, Inc.  
Mr. and Mrs. Samuel Arthur  
Mrs. and Mr. Dianne M. Ashworth  
Dr. Brian Ault  
Ms. Monica M. Ayres  
Lucinda Bailey  
Mr. and Mrs. Thomas H. Baker  
Ms. Satheesh Banda  
Paul Barbin  
Bascio Bros Italy LLC  
Mr. Mark Basile  
Ms. Donna Bassette  
Mr. Andrew Baum  
Mr. Sam Bayard  
Mr. and Mrs. Joseph Baynard  
Dr. Steven Beardsley  
Beazley USA Services  
Mr. Bradford A. Beebe  
Mr. and Mrs. David L. Benfer  
Ms. Katie Bennett  
Ms. Juliet Bercaw  
Mr. Edward Berling  
Best Ace Hardware  
David and Sandy Beswick

Mr. and Ms. Richard Betlejewski  
Mr. and Mrs. Paul A. Bielewicz, Jr.  
Mr. and Mrs. Robert H. Bigelow  
Mr. and Mrs. Roy A. Birl  
Dr. and Ms. John J. Bisaha  
Bisson-Callaghan Fund  
Mr. & Mrs. Thomas W. Black  
Ms. Jennifer Blasko  
Ms. Karen M. Bloch  
Ms. Carla Bloss  
Mr. and Mrs. Samuel Blumberg  
BNY Mellon  
Bob's Discount Furniture Charitable  
Foundation  
David and Laura Bonner  
Mrs. Ellen Bossert  
Mr. David Bower  
Mr. and Mrs. Michael W. Bowers  
Mr. Kevin Bowman  
Mrs. William Bowser  
Ms. Susan Boyce  
Mr. and Mrs. Michael J. Boyle  
Mr. Philip Brandt  
Mr. and Mr. Victor Branham  
Mr. David Brennan  
Ms. Adrian Broderick  
Ms. Margaretta Brokaw  
Ms. Sarah Bronson  
Mr. Dwight M. Brothers  
Ms. Joyce Brown  
Mrs. Kathleen M. Brown  
Matthew and Elizabeth Brown  
Mr. Robert F. Brown  
Mr. Warren R. Brownell  
Doug and Judith Bruess  
Bryan Realty Group LTD  
Ms. Elizabeth J. Bryson  
Mr. and Mrs. Jerry W. Buckworth  
Ms. Nancy M. Bull  
Ms. Marsha J. Burd  
Mr. and Mrs. Douglas J. Burke  
Mr. Scott Burris  
Mr. Jeoffrey Burtch  
Dr. Judith Butler  
Ms. Elaine B. Butterfoss  
Ms. Jane Bye  
Mrs. Joan Byrne  
C. O. Sabino Corporation



Mr. James A. Caddell  
Ms. Christine Caffee  
Mr. Michael Cahill  
Ms. Marcia Campbell  
Campbell Soup Foundation  
Ms. Adele M Canup  
Cape Henlopen Elks #2540  
Mr. and Mrs. Mark W. Carello  
Ms. Ellison M. Carey  
Mr. James C. Carlin  
Dr. Peter Carson  
Mr. Anthony Carter  
Carter Family Fund  
Caruso Homes, Inc.  
Albert and Cherie Casalnuovo  
Catherine D. King & E. Reese King  
Foundation Fund  
Mr. and Mrs. J. Richard Cerchio  
Ms. Deborah L. Chaffinch  
Ms. Margaret C. Chandler and  
Ms Dorothy Saynisch  
Ms. Pamela Chappell  
Ms. Aurelia Chaudhury  
Dr. Jennifer Cheek  
Mr. and Ms. Ming H. Chen  
Ms. Janet M. Chin  
Mr. and Mrs. Jonathan A. Choa  
Mr. & Mrs. Richard Chocolate  
Christ Church Christiana Hundred  
Mr. David Argentar and  
Ms. Laurie Christianson  
Church On Main  
Mr. and Mrs. Ronald C. Clapper  
Ms. Nancy Clark  
Mr. Simon Clarke  
Mr. and Ms. Timothy M. Clarke  
Mr. and Mrs. John C. Cleary  
Mr. James Cleaver  
Mr. Kenneth Cleaver  
Mr. Robert Clodius  
Msgt. and Mrs. Francis V. Cloutier  
Ms. Louise Cobbs  
Dr. and Mrs. Neal B. Cohn  
Commonwealth Trust Company  
Ms. Judith Condon  
Mr. and Mrs. Thomas M. Connelly  
Mr. Jay Conner  
Mr. Paul Conner

Mrs. and Mr. Joan Connolly  
Mr. and Mrs. James L. Cook  
Mrs. Leslie Cook  
Lammot Copeland  
Mr. Robert Costello  
Ms. Agatha Cotilletta  
Ms. Joyce A. Cover  
Mrs. and Mr. Diana H. Cowell  
Cozen O'Connor Foundation  
Mr. and Mrs. Daniel N. Crampton  
Mr. David S. Cristy  
Mr. and Mrs. John Cross  
CSC Corporation  
CSOLS, Inc.  
Mr. Kenneth H. Currier  
Ms. Barbara Curtis  
Mr. Wayne Danley  
K. and Barbara Dastur  
Christal Dean  
Mrs. and Mr. Tamara C. DeFer  
Mr. and Mrs. Thomas M. Delaney  
Delaware Association Of Realtors  
Delaware Kids Fund  
Delaware Women's Golf Association  
Delicato Vineyards  
Mr. Charles Delmar  
Ms. Melody G. Devoe  
DFA Cares Foundation  
Mr. and Mrs. Robert Diehl  
Mr. Michael Diehl  
Ms. Elizabeth B. Dillon  
Mrs. Sandra H. Dobbins  
Ms. Mary C. Doherty  
Dr. and Mrs. Viroon Donavanik  
Mr. and Mrs. James M. Donnelly  
Mr. Kurt Doten  
Mr. David Dotzert  
Dover Electric Supply Col, Inc.  
Dover Lions Club  
Mr. and Mrs. Christopher J. Dowd  
Mr. Jon Dowling  
Ms. Pam Downs  
Mr. James Druding  
Ms. Sara Dubberly  
Ms. Mary F. Dugan  
Janet and Alan Dukart  
Mr. and Mrs. John E. Dull  
Mr. Ted Dwyer

Mr. and Mrs. Kevin Earl  
Mr. and Mrs. Duane E. Eaton  
Mr. Donald Eck  
Drs. G. Mitchell and Loretta Edmondson  
Mr. John Edwards  
Dr. Eric F. Eikenberry  
Ms. Roxanne S. Elliott  
Mrs. Molly Ellis  
Ms. Norma J. Ellis  
Mr. and Mrs. Jonathan Ellsworth  
Ms. Martha Elterich  
Mr. and Mrs. Robert E. Emrich  
Mr. Milton Eng  
Margaret England Briggs  
Mr. and Mrs. Jonathan D. English  
Mr. and Mrs. Richard A. Epperly  
Dr. Dorothy J. Escobar  
Ms. Priscilla Eshelman  
Carolyn Espy  
Bruce and Dorothy Evans  
Ms. Karen Evenson  
Everlasting Presbyterian Church  
Ms. Alice C. Fagans  
Mr. Saverio Falco  
Dr. Monica Farah-Stapleton  
Mr. William B. Farnham and  
    Ms. Karen Sperle  
Mr. and Mrs. Evan Federman  
Mr. Craig Fedetz  
Ms. Elizabeth C. Feldman  
Ms. Marlene Fierro  
Mr. and Ms. Bruce Finkelstein  
Ms. and Mr. Linda J. Fischer  
Ms. Cecily Fisher  
Mr. Edward Fiske  
Ms. Geri Fitzgerald  
Mr. and Mrs. Barry Flannelly  
Dr. and Mrs. Alfred A. Fletcher  
Mrs. Anne Flett Giordano  
FMC Corporation  
Mr. Nicholas Foery  
Ms. Kay Ford  
Mr. and Mrs. Thomas A. Foster Jr.  
Foulk Road Dental  
Mr. and Mrs. Douglas C. Franke  
Ms. Judith A. Franks  
Mr. Craig Fraser  
Mr. Philip Fred

Mr. and Mrs. Stephen F. Freebery  
Mr. & Mrs. Steve Freebery  
Mr. John Freedman  
Mr. Louis Frontino  
Ms. Christina Funk  
Ms. Joan Gagliardi  
Mr. and Mrs. Frederick G. Gallagher, Jr.  
Mr. Phillip R. Gallo  
Mr. Bernard Ganley  
Garbutt Family Trust  
Mrs. Ann M. Gardner  
Mr. William H. Geddes  
Ms. Kathy G. Gehrt  
Mr. Marty Geier  
Mr. Todd Gelfand  
Mr. and Mrs. Joseph V. Gennusa  
Ms. Denise M. Geran and  
    Ms. Lyra R. Gibbs-Lloyd  
Dr. Sandra Gibney  
Mr. Stephen Gilbert  
Dr. and Mrs. James M. Gill  
Mr. Cameron Gilmore  
Ms. Virginia Giuffre  
Ms. Linda Givens  
Mr. and Mrs. Micah Glover  
Dr. Edward Goldenberg  
Katie Good  
Mr. and Mrs. Peter S. Gordon  
Mr. and Mrs. Michael Graves  
Ms. Marilyn Green  
Greenhill Farms  
Mrs. Dana Greenwood  
Ms. Erin Gregg  
Samuel and Kathleen Griffin  
Mrs. Ellen F. Grillo  
Mr. and Mrs. Alfred Grimminger  
Mr. and Mrs. Steven Grogg  
Mr. Brian Growney  
I. Barry and Eileen K. Guerke  
Ms. Cecilia T. Guerrette and  
    Ms. Donna C Salek  
Elizabeth Gula  
Mrs. Judith M. Gwaltney  
Mr. David Hahn  
Ms. Catherine Halen  
Mr. and Mrs. Steven K. Halstead  
Mr. and Mr. Lawrence A. Hamermesh  
Mrs. and Dr. Betty M. Hamilton



Ms. Anne L. Hampton  
Ms. Christina A. Hamrick  
Ms. Jennifer Han  
Ms. Verna E. Hanes  
Mr. & Mrs. Jason & Jennifer  
Hann-Deschaine  
Mr. and Mrs. John Hannum  
Mr. and Mrs. Oliver Hansen  
The Happy Difference Foundation  
Mr. James Harden  
Ms. Suzanne C. Harper  
Mr. David S. Harrer  
Pete and Joanne Harrigan  
Mr. and Mrs. John Harrington  
Mr. Richard Harris  
Mr. and Mrs. Edwin J. Harron  
Ms. Jayne E. Harwell  
Mark and Lilianne Hastings  
Mr. John J. Havrilla  
Mr. Cornelius S. Hawk, Jr.  
Ms. Cynthia Hay  
James and Maret Headley  
Mr. and Mrs. Leonard Heavner  
Ms. Carolyn S. Hedlund  
Mr. Robert Heffernan  
David and Susan Hefter  
Ms. Cynthia Heim  
Ms. Harriett E. Heinrichs  
Mr. & Mrs. William Heisey  
Mrs. Emily Heisig  
Mr. Thomas L. Hench  
Herbert & Myrtha Calhoun Family  
Charitable Foundation  
Mr. and Mrs. H. David Herman  
Edward Hertzfeld  
Mrs. Gretchen A. Hertzog-Mahar  
Mr. and Mrs. John W. Hickey  
Ms. Elizabeth Higginbotham  
Mr. Joachim Hirche  
Mr. David Hodulich  
Hoffman Pest Corporate Office  
Mrs. Susan Hoffman  
Mrs. Margaret Holley  
Dr. Kenneth Hollingsworth, M.D.  
Mr. William Holmes  
Mr. and Mrs. Daniel T. Horning  
Mr. Peter A. Horthy  
Mr. and Mrs. Yahuei Hua

Mr. Curtis Hudson  
Ms. Catherine Huidekoper  
Mr. and Mrs. John C. Huntzinger, Jr.  
Mr. and Mrs. Robert R. Hurka, Jr.  
Mr. & Mrs. Mark & Karen Huston  
Mr. Bruce Hyams  
Mr. Richard Ingram  
Invista Performance Materials, LLC  
Drs. Patrick S. Ireland  
Mr. Steven Ittel  
Mr. and Mrs. Paul R. Jacobs  
Ms. Barbara M. James  
Mr. David Jamison  
Ms. Anita M. Janney  
Mr. Nathan Jarmon  
Mr. and Mrs. Bob G. Jarvis  
Mrs. and Mr. Virginia Ann Z. Jester  
Mr. Edward Johnson  
Mr. and Mrs. Murray V. Johnston, III  
Mr. and Mrs. John A. Jordan  
Mr. and Mrs. Joseph R. Julian  
Ms. Cynthia Kaiser  
Ms. Catherine A. Kalisz  
Dr. and Mrs. Daniel J. Kasprzak  
Ms. and Dr. Cheryl Katz  
Mr. Lawrence Kearney  
Mr. Bruce A. Keller  
Mrs. and Mrs. Michael P. Kelly  
Mr. and Mrs. Gerard Kennealeay  
Dr. Anthony Kesich  
Ms. Kathleen Kiernan  
Mr. and Mrs. David Kilian  
King Crop Insurance, Inc.  
Ms. Jackie King  
Ms. Jan M. King  
Ms. Linda King  
Mr. and Mrs. William Kirby  
Ms. Susan Kittle  
Mr. Pat Kizuka  
Mr. and Ms. David A. Klein  
Mrs. and Mrs. Robert J. Klimm  
Mr. and Mrs. John W. Kling  
Mr. and Mrs. Christopher J. Kloxin  
Mr. Jeffrey P. Knapp  
Mr. and Mrs. William Knego  
Mr. and Mrs. Alexander D. Knight  
Ms. Elinor L. Knodel  
Ms. Geraldine Gallagher

Mr. and Ms. Peter Kolchin  
Mr. and Mrs. Kenneth J. Konesey  
Ms. Linda Kovacevich  
Ms. Patricia A. Kowinsky  
Kraft Heinz  
Mr. Robert L. Kraft  
Dr. and Mr. Janet P. Kramer  
Mr. and Mrs. John and Valerie Kratunis  
Mr. Kenneth Kremer  
Ms. Colleen Kryka  
Mr. Jonathan Kuhn  
Ms. Elena B. Kupchik  
Jean and William Kutcher  
LabWare Holdings, Inc.  
Mr. and Ms. Paul Lagasse  
Ms. Jane M. Lamb  
Mr. Sean Landers  
Mr. Michael Langager  
Mr. Matthew Lange  
Mr. Scott Lanham  
Ms. Lois T. LanzaLotti  
Mr. and Mrs. Randall Larrimore  
Ms. Rosemary E. Lassiter  
Mr. J. J. Lazzeri  
Mr. Kevin Leary  
Mr. Paul S. Lech  
Mr. James Lee  
Lt. Col. Janice L. Lee, USAF (Ret.)  
Dr. and Mrs. Harry Lehman, III  
Mr. Richard Leshner  
Ms. Hannah Leung  
Ms. Carol Levin  
Mr. James Lewis  
Mr. Roger W. Lewis  
Liberty Church  
Limestone Presbyterian Church  
Linda Kulin Charitable Foundation Inc.  
Mrs. Nancy Liro  
Mr. and Mrs. John Littell  
Mr. Harry Littleton  
Paula and George Long  
Mr. and Mrs. Simon J. Lowe  
Mr. and Ms. George W. Luther  
Mr. James Magee  
Mr. Francis Mahon  
Mallard Financial Partners Inc.  
Ms. Dorothy L. Mallozzi  
Ludmilla Malmberg

Mr. Richard A. Manacle  
Mr. & Mrs. James Mandell  
Mr. & Mrs. Kevin J. Mangan  
Ms. Danielle C. Manley  
Mr. and Mrs. C. Fredric Mann  
Amir and V. Mansoori  
Mr. and Mrs. Charles Marginot  
Ms. Harriet Marisa  
Ms. Elaine R. Markell  
Mrs. Beth Marshall  
Mr. Alan Marteney  
Dr. Abigail Martin  
Ms. Kathleen Martin  
Dr. and Mrs. S Eric E. Martin  
Mr. and Mrs. Peter F. Matarese  
Mr. and Mrs. Charles Mater  
Mrs. and Mr. Christine L. Mattes  
Mr. Kenneth Maurer  
Ms. Nancy S. Mayer  
Mr. and Mrs. Eugene A. Mayhew  
Mr. and Mrs. Edmund Mayo  
Mr. Thomas McBride  
McCabe Enterprises  
Dr. Michael McCann  
Ms. Polly G. McCarthy  
Mr. and Mrs. Rody L. McCathern  
Mr. and Mrs. Gregg L. McCauley  
Mr. and Mrs. John McCloskey  
Mr. and Mrs. Daniel P. McCollom  
Mr. Patrick McCormick  
Mr. Patrick L. McCubbin  
Ms. Kathleen McDaniel  
McDaniel, Inc.,  
John and Peggy McDevit  
Mr. and Mrs. Charles McDine  
Ms. Claire F. McElwee  
Mrs. Barbara McGeehan  
Mr. Patrick McGuire  
Ms. Jill H. McKeown  
Mr. and Mrs. Ronald McKinney  
Ms. Sandra A. McPherson  
Mr. Timothy McSherry  
Dr. and Mrs. John Meakin  
Mr. and Mrs. James L. Meek, Ph. D  
Mr. and Mrs. Daniel P. Meier  
Mr. and Mrs. V. J. Mercante  
Honorable Matthew Meyer  
Mr. and Mrs. Vincent Mileti



Milford Church of Christ  
Dr. and Mrs. Freeman Miller  
Mr. and Mrs. Nicholas Miller  
Millers Mutual  
Mr. & Mrs. John Mings  
Mr. Michael Mitchell  
Mr. James Money  
Mrs. Elyse Moore  
Morgan Stanley  
Ms. Theresa A. Morrin  
Morris James LLP  
Ms. Kelly Morrissey  
Ms. Margaret A. Morton  
Mr. & Mrs. Arthur Z. Moss  
Mt. Lebanon United Methodist Church  
Mr. Jason Mullen  
Mr. Andrew Mumford  
Mr. Martin J. Murafsky  
Mr. and Mrs. Robert E. Myers  
Mr. John M. Nash  
Ms. Jessica Neal  
Mr. and Mrs. Frederick Nebel  
Mr. Adam Neceils  
Mr. Richard Nelson  
Mr. Scott Nerses  
Mr. Robert Netherland  
Newark Natural Foods Co-Op  
Ms. Holly Newell  
Mr. and Mrs. John E. Newlin, III  
Mr. and Mrs. Franklin Newton  
Mr. and Mrs. Gary Nichols  
Mr. James F. Nichols, Jr.  
Nickle Electrical Companies, Inc.  
Mr. Mark Nikolich  
Ms. Susan Nolan  
Nor'easter Foundation  
Mr. and Ms. Jerry W. Northington, D.V.M  
Northrop Grumman Corporation  
Dr. Dael Norwood  
Mrs. Mary O'Shea  
Mr. and Mrs. Matthew R. Oberholzer  
Thomas and Jennifer O'Brien  
Ms. Dawn O'Connell  
Ms. Margaret S. Odiorne  
Mr. & Mrs. Steven Ogintz  
Mr. Austin Okie  
Mr. and Mrs. Willam Olsen  
O'Neal's Antiques

O'Neil Beverages Co. LLC  
Nicholas O'Neill  
Mr. Richard Oparowski  
Mrs. Maria Orourke  
Mr. and Mrs. Joseph D. Outlaw  
Dr. and Ms. Alan B. Palmer  
Dr. and Mrs. Peter B. Panzer  
Mrs. and Mr. Lois A. Paul  
Ms. and Mr. Judith G. Payson  
Pearls on Pages Ministries, Inc.  
Mr. & Mrs. Ken and Donna Pelletier  
Mr. Frank Perko Jr.  
Mr. and Mrs. Norman Pernick  
Mr. Bruce Peterjohn  
Ms. Carol Peters  
Mr. Eric S. Petersen  
Mrs. Lisa Peterson  
Dr. and Mrs. Nicholas J. Petrelli  
Mrs. Terri Piser  
The Pittsburgh Foundation  
Mr. Charles Pohl  
Mr. and Mrs. David Pollack  
Mr. Alfred Pompper Jr.  
Porsche Club of America  
Mr. and Mrs. Robert C. Porta  
Mr. Jeffrey M. Porter and  
    Ms. Rose Passarella  
Mr. Richard Porter  
Ms. Michelle A. Poulin  
Mrs. Carol-Anne Poursaied  
Mr. and Mrs. Wyman J. Priester, III  
Ms. Karen D. Pritchett  
Dr. and Dr. William D. Provine  
Mr. Austin Publicover  
Mr. and Mrs. A. Michael Pusey  
Mr. Roderic Quick  
Ms. Priscilla R. Quinn  
Mr. and Mrs. David R. Rager  
Mr. and Mrs. Michael Ramone  
Mr. David A. Ramsdell  
Ms. Lisa Rasmussen  
Anne Rawnsley  
Mr. and Mrs. Brian J. Read  
Ms. Deborah R. Reaves  
Regulatory Insurance Services, Inc.  
Mr. Charles A. Reisdorf  
Mr. Martin Rendon  
Mr. Joseph J. Rhoades

Daniel and Nancy Rich  
Ms. Sandi Richardson  
Mr. Robert R. Ridout  
Mrs. Carolyn S. Riecke  
RKD Alpha Dog  
Mr. Ian Roberts  
Mr. & Mrs. Michael Roberts  
Mr. and Mrs. Frank R. Robertson  
Mr. David B. Rogers  
Ms. Alice Roggie  
Mr. Paul Romagano  
Mr. & Mrs. James and Darlene Rooney  
Mr. George H. Rosenberg  
Rotary Club of Newark  
Dr. and Mrs. John B. Rule  
Ms. Margaret Saenger  
Ms. Zona Saez  
Dr. and Mrs. Howard Sands  
Mr. William Santora  
Ms. Ella Savage  
Ms. Catherine L. Scheck  
Mr. and Mrs. John W. Schefflen  
Schell Brothers, LLC  
Ms. Jessie Schol  
Ms. Mary Louise Schuchler White  
Mr. and Mrs. Richard F. Schwer  
Seaside Amusement, Inc  
Mr. and Mrs. David Selinger  
Mr. Troy Senter  
Mr. Adarshpal Sethi  
Dr. Brian Setzler  
Dr. Suken A. Shah  
Mr. and Ms. Peter M. Shannon  
Mr. and Mrs. William J. Sharkey Jr.  
Mr. Robert H. Shelton  
Mr. Benjamin Shepard  
Dr. and Mrs. David Sheslow  
Shore United Bank  
Ms. Donna C. Short  
Dr. and Mrs. Tom Short  
Mr. Bret Shue  
Mr. & Mrs. Richard Silcox  
Mr. Stephen Simms  
Mr. Borah S. Simon  
Mr. and Mrs. Joseph A. Sladewski  
Mrs. Sharyn Slater  
Caroline Smith  
Dr. and Mrs. Clifford O. Smith

Mr. and Ms. David A. Smith  
Mr. Gerald Smith  
Kim Smith  
Mr. and Mrs. Mark E. Smith  
Ms. P. Michelle Smith  
Rodney and Judy Smith  
Henry Smithies  
Dr. Susan Snodgrass  
Mr. and Mrs. Michael Sosnoski  
Dr. and Mrs. David Sowa  
Mr. Magee Spencer  
Ms. Ellen Spurrier  
Mr. Matthew D. Stachel  
Mr. Lawrence Stanislaw  
Starbucks Foundation  
Steen, Waehler, & Schrider-Fox  
Ms. Kim Steininger  
Mr. David Stella  
Ms. Janis Stephens  
Mr. Jay M. Stevens  
Ms. Zora R. Stevens  
Mr. Mark A. Stewart  
Mr. Joseph Stickel Jr.  
Mr. and Mrs. Donald W. Stitz  
Mr. David D. Stranz  
Dr. John R. Stump  
Mr. & Mrs. Pallatheri M. Subramanian  
Ms. Karen E. Surles  
Sussex County Council  
Dr. & Mrs. Richard H. Sutor  
Mr. and Mrs. William Swain  
Mrs. Lynne Sweeney  
Mr. Raymond W. Sweet  
Ms. Marguerite Talone  
Mrs. Gina Talwar  
Edward and Judy Tarlov  
Mr. Edward Taubert  
Ms. Amy Taylor  
Mr. and Mrs. Martin Taylor  
Ms. Nicholle Taylor  
Master Shower Doors  
Ms. Carol Tegge  
Ms. Dorothy Teixeira  
The Community Church of  
the Lord Jesus Christ  
Debi and Jeff Thomas  
Ms. Karen Thomas  
Ms. Lorraine Thomas



Ms. Melinda Thompson  
Mr. Kevin Thorsell  
Dr. Russell J. Tibbetts, D.D.S.  
Mrs. Angela Tilton  
Ms. Carolyn Timmons  
Ms. Sharon Torre  
Tri Gas & Oil Co., Inc.  
Trinity Subsurface LLC  
Pastor Michelle Troutman  
Mr. and Mrs. David M. Trudnak  
Mr. Gerald Today  
Mr. Carl A. Tull  
Mr. Oscar Turk, Jr.  
Mr. Will Turner  
Mr. and Mrs. Jameson A. L. Tweedie  
United Distributors of DE, LLC  
V A Forster Consulting, Inc  
Mr. and Mrs. Thomas E. Vadden Jr.  
Mr. Amit Vadhera  
Mr. Martin Valania  
Mr. and Mrs. John Van Dorpe  
Mrs. Taylor D. Van Duyn  
Mr. John D. Van Gorp  
Mr. Samuel Van Horne  
Mr. & Mrs. Douglas P. Van Rees  
Mary VanderDussen  
Christopher Vanuga  
Mr. Steven Varnes  
Mr. Richard D. Venish  
Mr. and Mrs. Joseph C. Virion  
Mr. and Mrs. Eric Wadman  
Mr. Andre Walker  
Mrs. Catherine Wallace  
Mr. and Mrs. David J. Wallan  
Walmart Foundation  
William Ward  
Mr. David Warren  
Ms. JoAnn S. Watson  
Mrs. D.L. Waud  
Mr. and Dr. Gerald G. Weaver, II  
Mr. Ron Weber  
Ms. Julianne M. Weidman  
Mr. and Mrs. Kirk Weiland  
Ms. Mary E. Whealy  
Mr. Robin White  
Rod White  
Dr. Jermaine D. Whitman Smithe  
Mr. Kevin Whittaker  
Mr. Kurt Wibbens

Ms. Louise Wiley  
Mr. and Mrs. George C. Williams  
Mr. Jeff Williams  
Shawn, Dawn, Patrick, & Anna Williams  
Mr. and Dr. John L. Willis, Jr.  
Mr. Kenneth Willis  
Mrs. and Mr. Bridget K. Wilson  
Mr. John Winchester  
Mr. Francis L. Winslow  
Mr. Thomas C. Wise  
Mr. and Mrs. Robert S. Wojewodski  
Mr. and Mrs. Michael Wood  
Worship Christian Center  
WSFS Bank  
X3M Systems, LLC  
Miss Kyunghee Yang  
Ms. Katherine Yates  
Mrs. Mary L. Young  
Ms. Rosemary Young  
Mr. and Mrs. Allen Y. Zack  
Mr. and Mrs. Anthony F. Zavarelli  
Ms. Silvia Zsoldos



## HELP US END HUNGER

Newark Headquarters  
222 Lake Drive  
Newark, DE 19702  
(302) 292-1305

Milford Branch  
1040 Mattlind Way  
Milford, DE 19963  
(302) 424-3302

[www.fbd.org](http://www.fbd.org)

